



WHITLEY SECONDARY SCHOOL

30, Bishan Street 24, Singapore 579747. Tel: 64561336 Fax: 64591330

Sale of Textbooks and Uniforms for 2024 (Sec 1)

Online Purchase for Textbooks & Uniforms: Starts on 21 Dec 2023*

No.	Item	Textbook & PE Attire Sales	Uniform Sales
1	Vendor Website	cozybook.store.link	www.shirleyuni.com
2	Collection by Appointment for Online Purchase (3 days in advance)	<u>At School Bookshop :</u> 26, 27, 28, 29 Dec (8am to 4pm) 2 to 5 Jan (8am to 3pm)	<u>At Shop:</u> Daily in Dec 2023 (12 to 6pm) <u>In School (Room D1-12):</u> 27 & 28 Dec (9am to 3pm)
3	Home Delivery Fee (if applicable)	\$13.80	\$7
4	Walk-in Purchase	<u>At School Bookshop :</u> 26, 27, 28, 29 Dec (8am to 4pm) By appointment via Whatsapp @ 8466 2516 or 93280203 2 Jan onwards (8am to 3pm)	<u>At Shop:</u> Daily in Dec 2023 (12 to 6pm) <u>In School (Room D1-12):</u> 27 & 28 Dec (9am to 3pm) <u>In School Bookshop :</u> 2 Jan onwards (8am to 3pm)

FAS students : The school will contact you to collect the above items on 27 or 28 Dec (9am to 12nn). Please get ready with the uniform sizes.

** Or the following working day after Release of Sec 1 Posting Results, whichever is later*

Important Note:

Please check that you purchase the correct books especially if your child/ward is being offered subject-based banding (SBB) for certain subjects. Do not purchase books for Mother Tongue language and subjects that the child is eligible to take at a higher stream until these subjects are confirmed. Lessons will commence on 8 Jan 2024, after the Orientation Programme

More Information on Sales of Uniform

Address:

Shirley Season Wear

7030 Ang Mo Kio Ave 5 #04-55 Northstar @ AMK S(569880)

Tel: 6280 4917 Whatsapp: 97695678

Email: getintouch@shirleyuni.com

Website: www.shirleyuni.com

Operating Hours:

Dec: 12.00 pm – 6.00 pm DAILY

How to get started for Online Purchase?

Scan



www.shirleyuni.com

1. Login/Scan @ www.shirleyuni.com
2. Click on 'School Uniform', and choose Whitley Secondary School.
3. Next, click on the choice of item and add it to the cart.
4. Once done, click on the "Cart button" on the top right to make payment.
5. Lastly, choose your collection method and proceed to check out with your particulars.

Measurements for Whitley Secondary School Uniform

Boy/Girl Shirt – Measurements in Inches

Size	32	34	36	38	40	42	44	46	-
Shoulder	15	15.5	16	17	18	19	19	20	-
Chest	38	40	42	43	44	46	48	50	-
Length	25	26	27	29	29	30	30	31	-

Boy Short Pants – Measurements in Inches

Size	26	28	30	32	34	36	38	40	42
Waistline	26	28	30	32	34	36	38	40	42
Length	14.5	15.5	16.5	17	17.5	18	19	20	20

Boy Long Pants– Measurements in Inches (For Upper Sec)

Size	26	28	30	32	34	36	38	40	42
Shoulder	26	28	30	32	34	36	38	40	42
Length	37	37	39	39	39	40	40	40	40

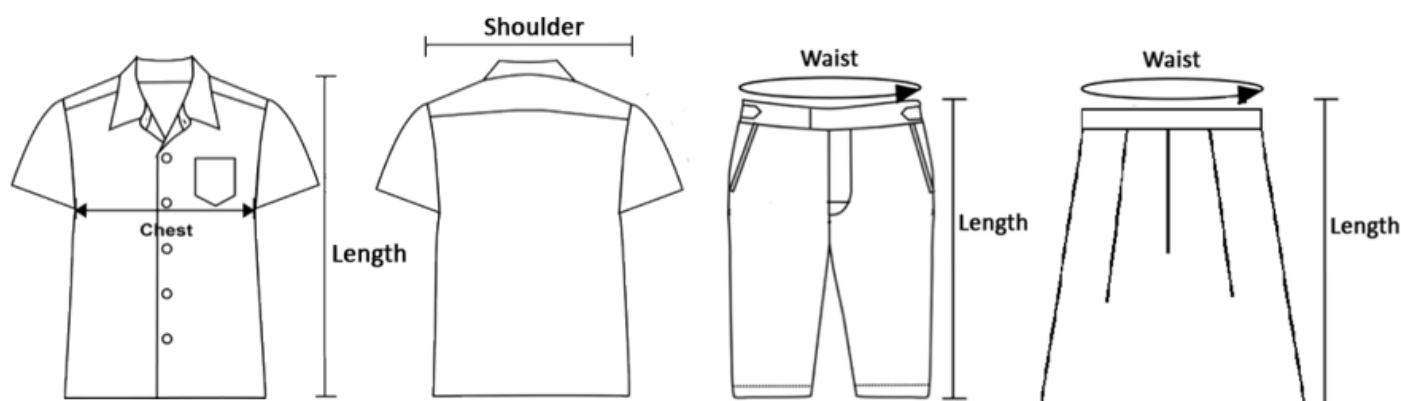
Girl Skirt – Measurements in Inches

Size	24	26	28	30	32	34	36	38	40
Waist	24	26	28	30	32	34	36	38	40
Length	20	21	21	21	22	22	22	23	23

How to measure and select your size

Shirt

Pants/ Skirt



Students who require customised fittings of uniform may check with the uniform vendor at tel: 6280 4917 or email to getintouch@shirleyuni.com