



# WHITLEY SECONDARY SCHOOL

30, Bishan Street 24, Singapore 579747. Tel: 64561336 Fax: 64591330

## Sale of Textbooks and Uniforms for 2025 (Sec 1)

Online Purchase for Textbooks & Uniforms: Starts on 18 Dec 2024

No.	Item	Textbook & PE Attire Sales	Uniform Sales
1	Vendor Website	cozybook.store.link	www.shirleyuni.com
2	Collection by Appointment for Online Purchase (3 days in advance)	<u>At School Bookshop:</u> 20, 23, 26, 27 and 30 Dec 2024 (9am to 3pm)  2 & 3 Jan, 6 to 10 Jan 2025 (8am to 3pm)	<u>At Shop:</u> Daily in Dec 2024 (12 to 6pm)  <u>In School (Room D1-11):</u> 27 & 30 Dec (9am to 3pm)
3	Home Delivery Fee (if applicable)	\$13.80	\$9
4	Walk-in Purchase	<u>At School Bookshop:</u>  20, 23, 26, 27 and 30 Dec 2024 (9am to 3pm) By appointment via Whatsapp @ 9328 0203  2 & 3 Jan, 6 to 10 Jan 2025 (8am to 3pm)	<u>At Shop:</u> Daily in Dec 2024 (12 to 6pm)  <u>In School (Room D1-11):</u> 27 & 30 Dec (9am to 3pm)  <u>In School Bookshop:</u> 2 Jan onwards (8am to 3pm)

*FAS students: The school will contact you to collect the above items on 27 or 30 Dec (9am to 3pm). Please get ready with the uniform sizes.*

### Important Note:

Please check that you purchase the correct books especially if your child/ward is being offered subject-based banding (SBB) for certain subjects. Do not purchase books for Mother Tongue language and subjects that the child is eligible to take at a higher stream until these subjects are confirmed. Lessons will commence on 13 Jan 2025, after the Orientation Programme

### More Information on Sales of Uniform

Address:

**Shirley Season Wear**

7030 Ang Mo Kio Ave 5 #04-55 Northstar @ AMK S(569880)

Tel: 6280 4917 Whatsapp: 97695678

Email: [getintouch@shirleyuni.com](mailto:getintouch@shirleyuni.com)

Website: [www.shirleyuni.com](http://www.shirleyuni.com)

Operating Hours:

Dec: 12.00 pm – 6.00 pm DAILY

## How to get started for Online Purchase?

Scan



[www.shirleyuni.com](http://www.shirleyuni.com)

1. Login/Scan @ [www.shirleyuni.com](http://www.shirleyuni.com)
2. Click on 'School Uniform', and choose Whitley Secondary School.
3. Next, click on the choice of item and add it to the cart.
4. Once done, click on the "Cart button" on the top right to make payment.
5. Lastly, choose your collection method and proceed to check out with your particulars.

## Measurements for Whitley Secondary School Uniform

### Boy/Girl Shirt – Measurements in Inches

Size	32	34	36	38	40	42	44	46	-
Shoulder	15	15.5	16	17	18	19	19	20	-
Chest	38	40	42	43	44	46	48	50	-
Length	25	26	27	29	29	30	30	31	-

### Boy Short Pants – Measurements in Inches

Size	26	28	30	32	34	36	38	40	42
Waistline	26	28	30	32	34	36	38	40	42
Length	14.5	15.5	16.5	17	17.5	18	19	20	20

### Boy Long Pants– Measurements in Inches (For Upper Sec)

Size	26	28	30	32	34	36	38	40	42
Shoulder	26	28	30	32	34	36	38	40	42
Length	37	37	39	39	39	40	40	40	40

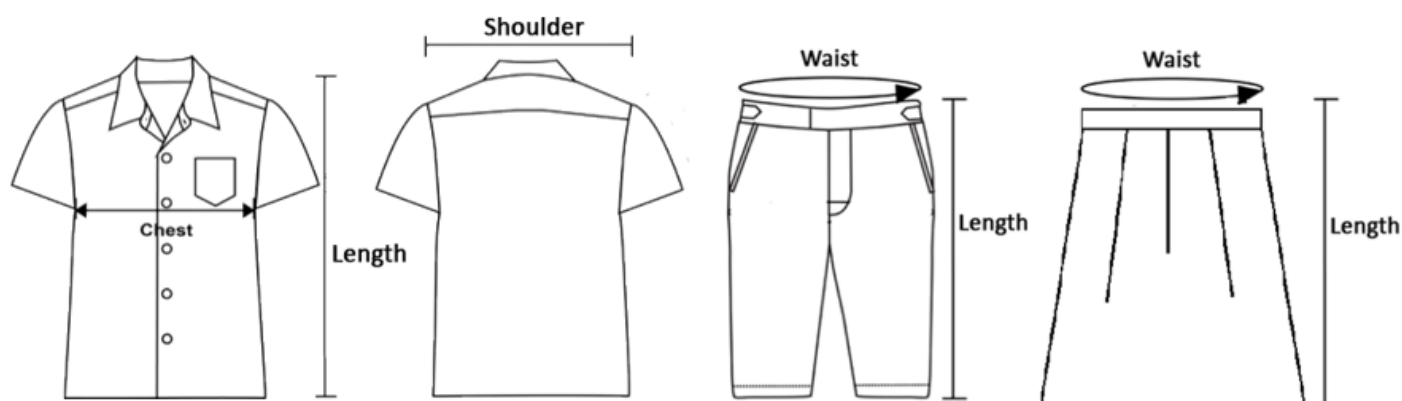
### Girl Skirt – Measurements in Inches

Size	24	26	28	30	32	34	36	38	40
Waist	24	26	28	30	32	34	36	38	40
Length	20	21	21	21	22	22	22	23	23

## How to measure and select your size

Shirt

Pants/ Skirt



Students who require customised fittings of uniform may check with the uniform vendor at tel: 6280 4917 or email to [getintouch@shirleyuni.com](mailto:getintouch@shirleyuni.com)